

SAFETY

A white semi-truck is parked at a loading dock of a large warehouse. The truck is positioned in front of a dock door, and its trailer is extended into the dock. The warehouse has a grey facade and several other dock doors are visible in the background. The sky is blue with some clouds. The word 'SAFETY' is overlaid on the image in large, white, semi-transparent letters.

Loading Dock Safety

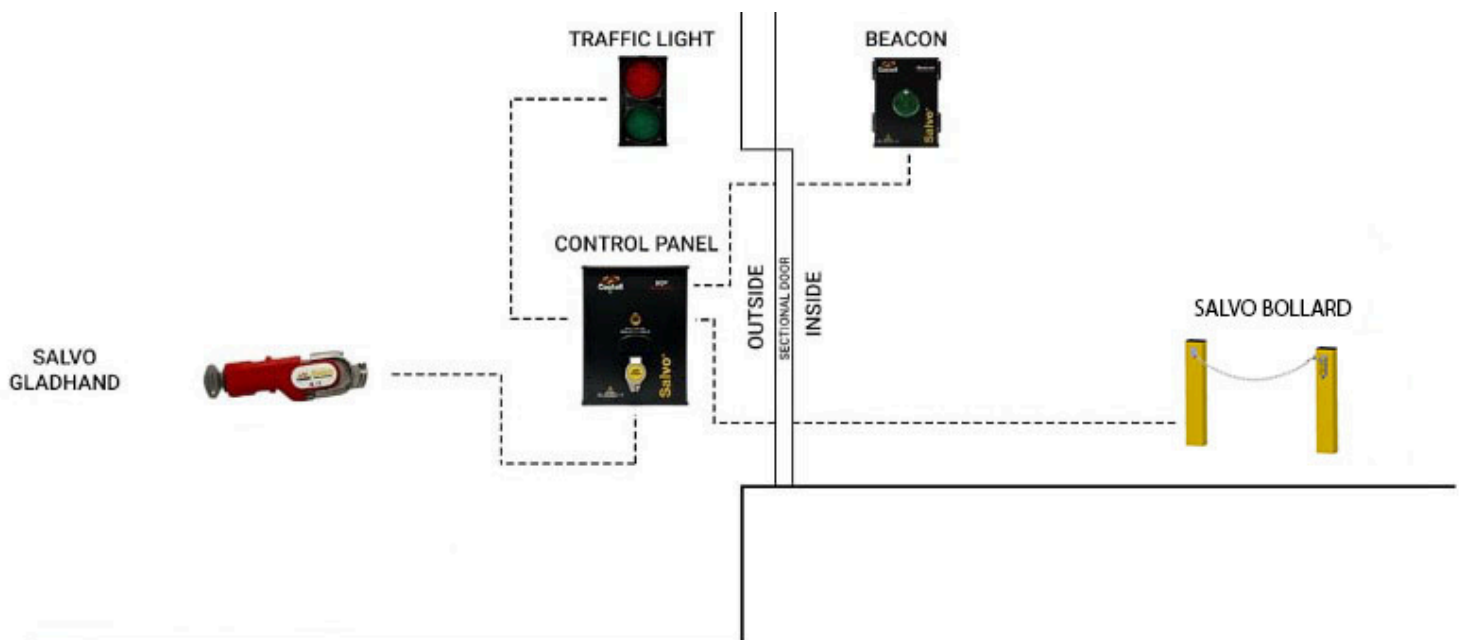
How Salvo Works

The Salvo Solution:

- Enforces loading procedures
- Eliminates bay pull offs
- Remove the risk of error
- Reduces dependence on verbal communication for safety
- Easy to use
- Low maintenance
- Improves efficiency
- Improves security
- Protects assets & personnel



Example:



Solution for Trailers

SGL (Salvo Gladhand) + SCP (Salvo Control Panel)

With this solution, our SGL is connected to the brake line on the trailer, then the key is removed and inserted into our control box. The key is locked in the SCP after the gate is opened and cannot be removed until the gate is closed again.



Solution for Swap Bodies

SBL (Salvo Swap Body Lock) + SCP (Salvo Control Panel)

With this solution, our SBL is fitted into the twist lock aperture on a swap body trailer, then the key is removed and inserted into our control box. The key is locked in the SCP after the gate is opened and cannot be removed until the gate is closed again.



Solution for Rigid/Box Tracks

SWL (Salvo Steering Wheel Lock) + SCP (Salvo Control Panel)

With this solution, our SWL (steering wheel lock) is connected to the steering wheel of the truck, then the key is removed and inserted into our control box. The key is locked in the SCP after the gate is opened and cannot be removed until the gate is closed again.

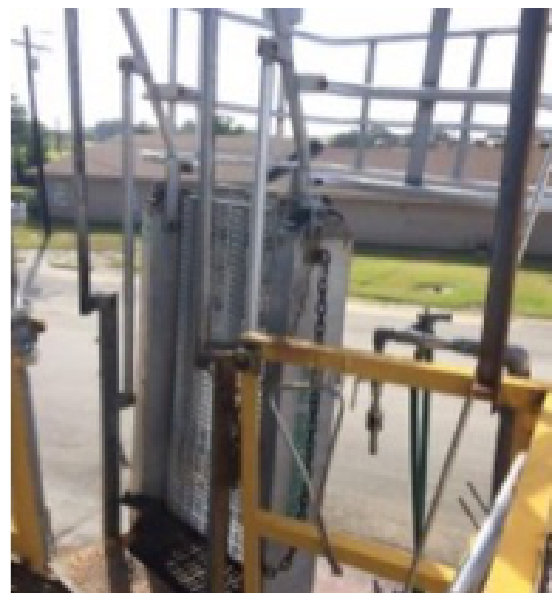


Solution for Tankers and Gangways

AI Lock Chain (Salvo) with MBV (Modular Ball Valve Interlock)/ KS20 Switch

With this solution, AI-Lock is used to secure access to the platform.

Only by correctly locking the truck using SWL or SGL does the key release, which can then be used to unlock the platform or pump.



An interlock mounted on the gangway door used to face a sequential loading process

Solution for open platform

Salvo Bollards

This solution uses SALVO Bollards to secure access to the platform.

Only by correctly locking the truck using SWL or SGL does the key release, which can then be used to unlock the platform.





Sidas Srl
Via Dante 2/2
16121 Genova

www.sidassafety.it
sidas@sidasas.it
+39 010565388